

NAVARATNALU

New Welfare & Development Strategy of Andhra Pradesh

Integrated, Inclusive, decentralised, people-centric governance

D.V.V.Sitapathi Rao, Jt. Director, Planning Dept.

Strengths of the State

Rich in primary sector; Huge potential in tourism; Highly skilled population

Agriculture

- Ranked 1st in Egg Production; 2nd in Meat Production and 3rd in Milk Production
- Ranked 2nd in Paddy, Groundnut and Maize Production
- 8.5 Million Hectares of Net Cultivable Area

Aquaculture

- Aqua Capital of India
- Largest Producer of Shrimp in India
- Ranked 1st in Coastal & Fresh Water Aquaculture, and 2nd in Freshwater Fish Production

Mining

- Largest Source of Barytes in India
- Huge Shale & Slate Reserves
- ~ 130 MT of Granite and ~ 320 MT of Heavy Minerals Beach Sand

Tourism

- Ranked 3rd in India - 165 Million Domestic Tourist Arrivals
- Plethora of Tourist Spots covering Coastal, Religious, Adventure, Eco-tourism etc.

People

- Ranked No.1 in Employability in 2019
- Strong Contribution of People to Growth of IT Sector in India and Abroad
- Huge social capital

Challenges

01. Geographical Adversity

Repeated droughts | Frequent
Cyclones

02. Population Composition

Scheduled Castes - **17.08%**
Scheduled Tribes - **5.53%**

03. Low Literacy Rate

Andhra Pradesh - **67.35%**
India - **72.98%**

04. High Infant Mortality Rate

Andhra Pradesh - **32**
India - **33**

05. High Maternal Mortality Rate

Andhra Pradesh - **74**
Highest in South India

06. High Malnutrition

Andhra Pradesh - **31.9%**
(11th worst in the Country)

07. Agrarian Economic Structure

34% share of GSDP with negative
growth last year

08. Low Urbanization Rate

Andhra Pradesh - **29.6**

09. Gross Enrollment Ratio

Primary Education - **85.59%**
Upper Primary Education - **83.93%**

10. Setback Due To State Bifurcation

Unscientific Bifurcation,
Loss of Hyderabad,
Loss of Revenues
Loss of Institutions,
R&D, etc.

Integrated & Inclusive Development Strategy

Social & Economic Development supported by Governance Transformation covering all sections of society



Investing in Human Development

NAVRATNALU

- Farmers' Welfare
- Universal Quality Health Care
- Universal Quality Education – Fees and support to mothers
- Social Security
- Interest Free Loans
- Housing for All
- Potable Water for All
- Progressive Alcohol Ban

Perfect Harmony with Sustainable Development Goals



Economic Growth

DEMOGRAPHIC TRENDS

- Working Age Population
- Urbanization

REGIONAL COMPETITIVENESS

- Skilled Manpower
- Food Processing
- Industrial Corridors & Manufacturing Clusters
- Infrastructure
- Port Centric Development

GOVERNANCE

- Transparent,
- Responsive,
- Effective,
- Corruption-free,
- Decentralised

Decentralized People Centric Governance - Village Secretariat and Volunteers



1

State level action

- Operationalize Key Socio Economic Programs
- Information Convergence for Planning and Monitoring

2

Strategy and Process

- Empowered Village Secretariats

3

People

- Skilled Frontline Workers

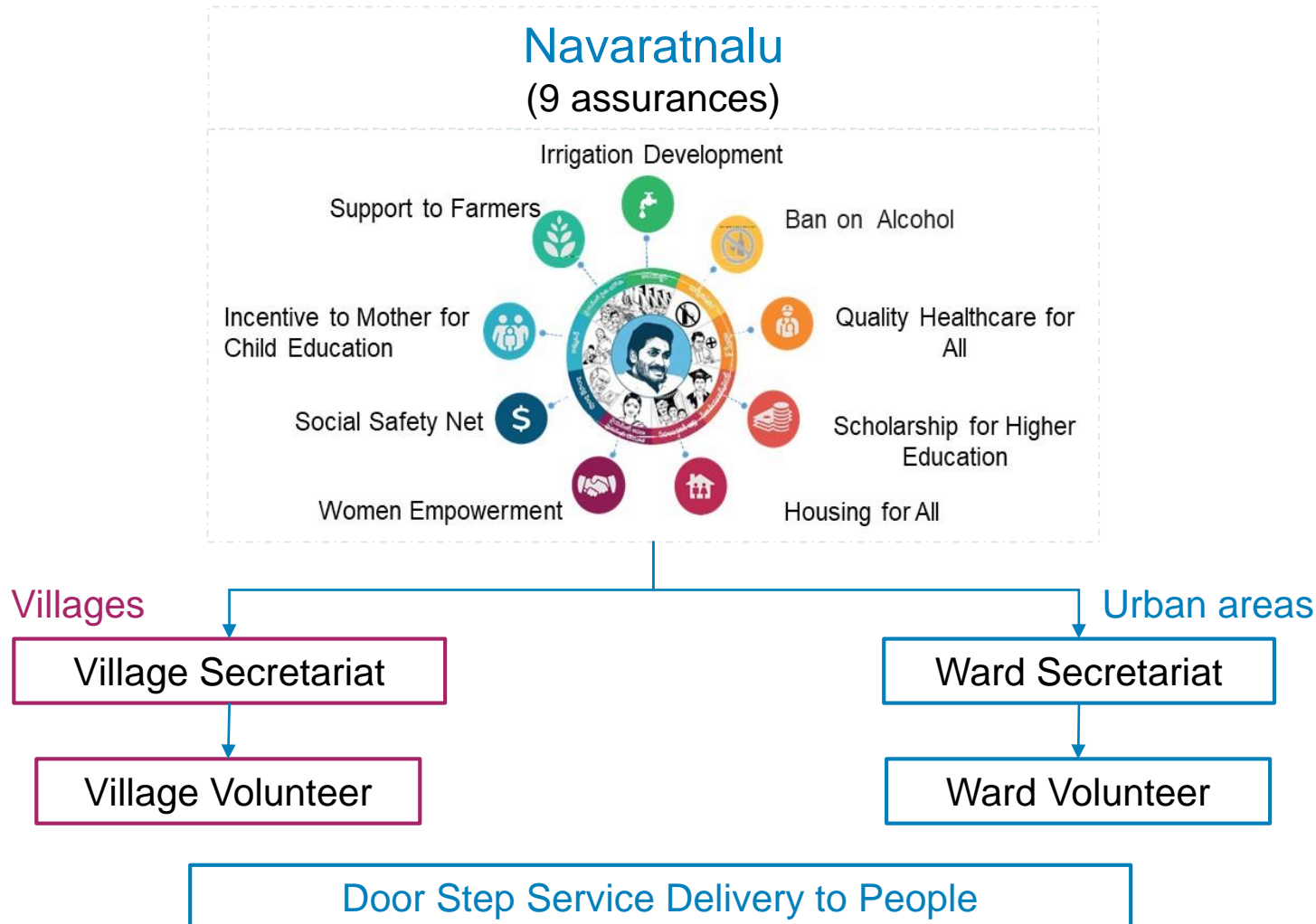
4

Infrastructure

- Delivery of Essential Services through Volunteers
- Improved Monitoring and Data Management

Volunteers Delivering High Impact Services at Door Step of People

Decentralize Service Delivery, Execution of Schemes/Programs and Ensure Effective Implementation of Navaratnalalu



High Impact Services

- 1 Distribution of Pensions, Title Deeds, Ration / Arogyasri Cards
- 2 Door step delivery of Essential Commodities.
- 3 Power supply and Drinking Water Tap connection to Houses
- 4 All types of certificates (Caste, Nativity, Residence, Death, Birth)
- 5 Assisting Farmers in Seed Testing
- 6 Delivery of Economic Support Schemes for Vulnerable

Investing in future – Universal Health Care

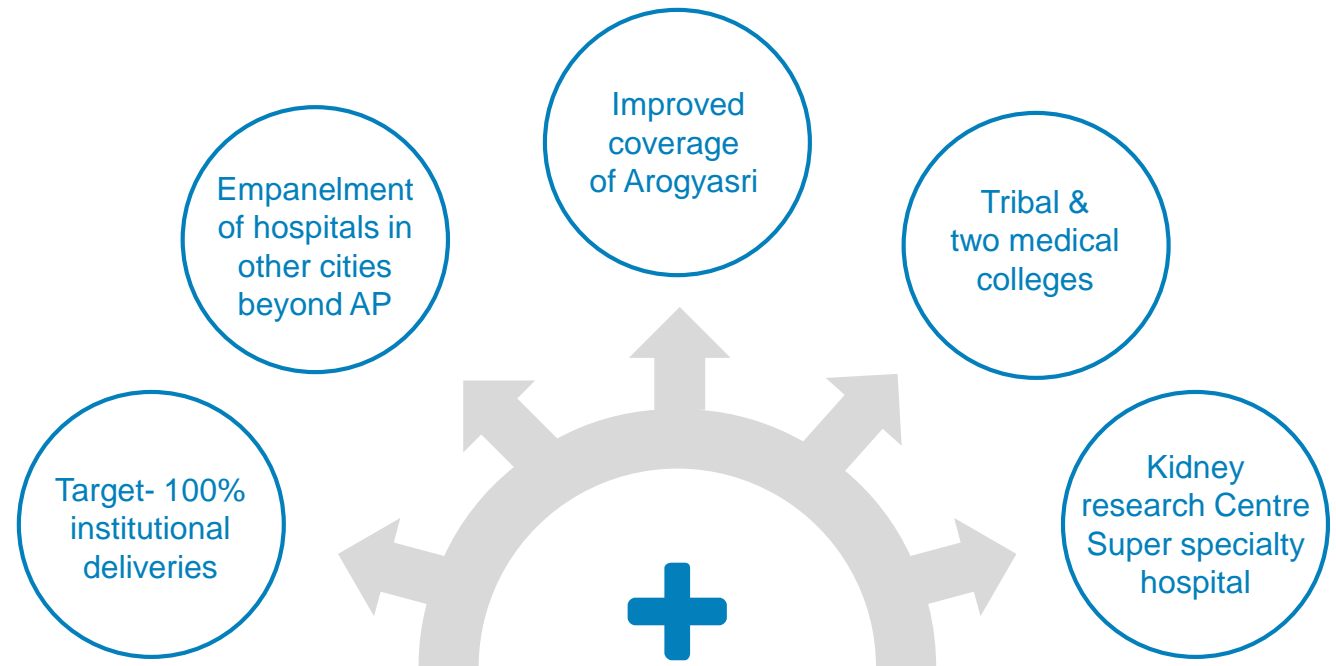
Strengthened Public Health System, Referral Services, Ambulance and Call Center Services, Electronic Family Health Records, Establishing Treatment Protocols, Standardization of Quality Effective Monitoring Of Hospital Services

Navaratnalu (9 assurances)

Arogyasri (Public Financed Insurance)

- Applicable to all medical treatments for a specific amount
- All medical expenses would be borne by Government
- Reducing out-of-pocket expenditure

- State has allocated 5.5% of its expenditure on health, which is higher than average expenditure by other states (4.5%)
- State has budgeted \$215 Million for improvement of hospital infrastructure and \$718 Million for vulnerable communities



Investing in future – Education for all

Education for All and Doubling GER in Higher Education

Navaratnalu (9 assurances)

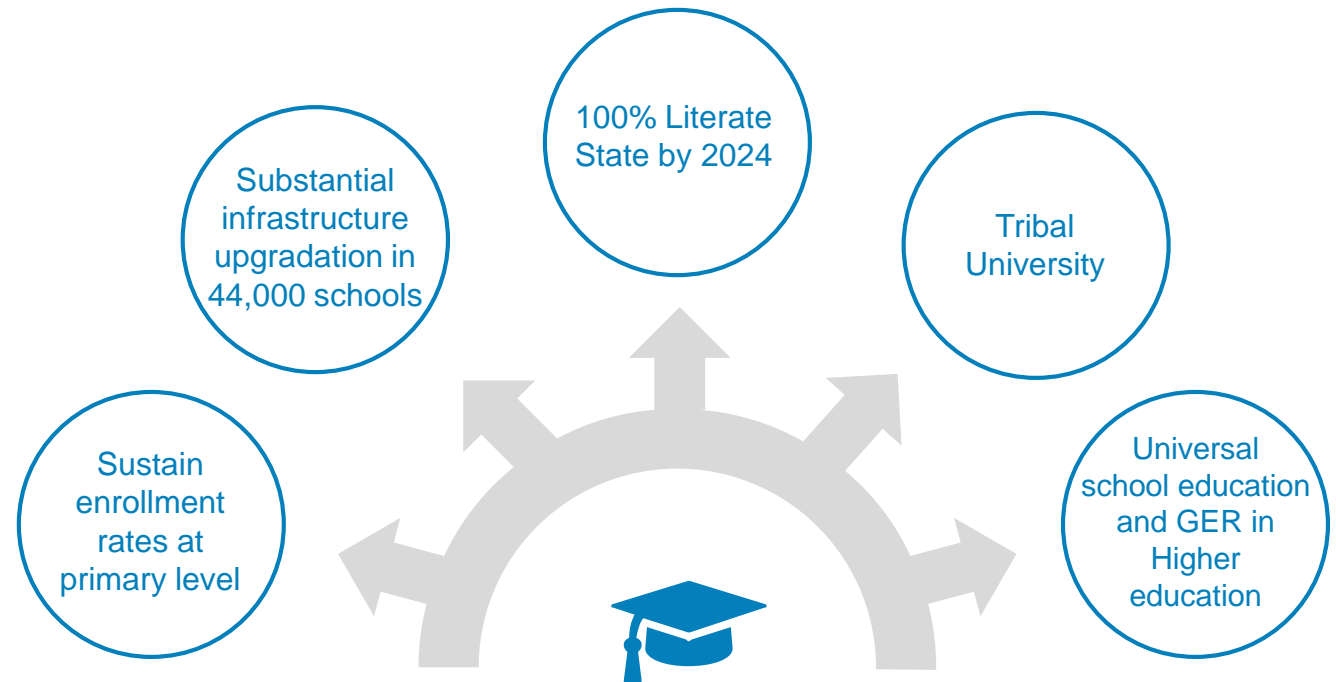
Fee Reimbursement

- Comprehensive fee reimbursement scheme and allowances
- Dedicated budget for each student's education

Amma Vodi (Incentive to mother)

Financial assistance to mothers who send their children to school

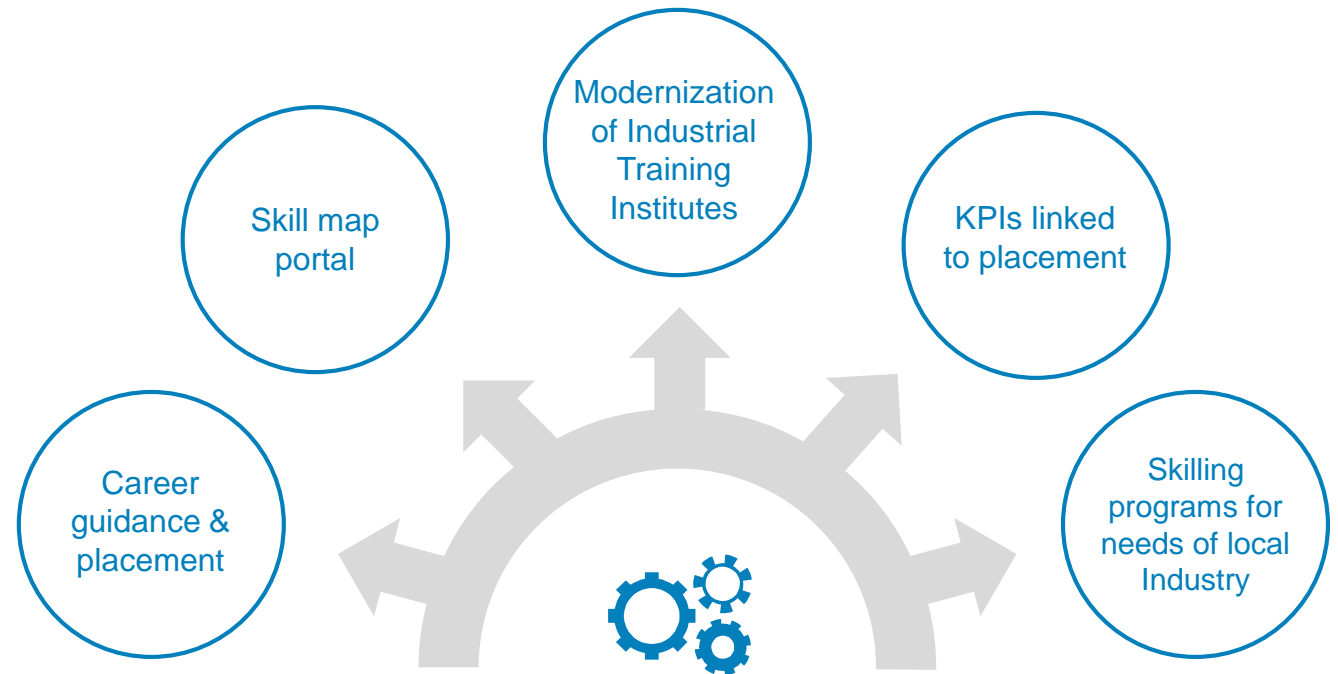
- State has allocated \$927 Million for school scholarships as a part of 9 assurances to the people
- State has budgeted \$217 Million for modernization of school infrastructure and English Medium Education



Investing in future – Skilled workforce

- Establish 25 State of the Art Skill development and Career Guidance Centre for Skilling of its Resources
- Reorientation of Skill Development Program to Align with Local Industry Requirement, Especially for Women

- Dedicated focus towards providing financial assistance to workforce for requisite skilling to enter market
- 75% reservation for local people for industry jobs



Important schemes of Govt. of Andhra Pradesh



JAGANANNA
AMMA VODI
Rs. 6456 Cr.



YSR RYTHU
BHAROSA
Rs.8750 Cr.



AROGYASRI
Rs.1740 Cr.



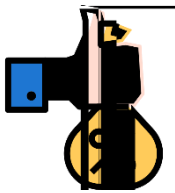
YSR GRUHA
VASATHI
Rs.5000 Cr.



YSR PENSION
KANUKA
Rs.15727 Cr.



JAGANANNA
VIDYA DEEVENA
Rs.3587 Cr.



INTEREST FREE LOANS
TO DWCRW WOMEN
Rs.1788 Cr.



VILLAGE
SECRETARIAT
Rs.1880 Cr.



FISHING JETTIES
Rs.100 Cr.

1. YSR Rythu Bharosa - FARMERS EMPOWERMENT - Investment Support To Cultivators

- Rs. 5185.35 Crores is distributed to 45.20 lakh farmer families (including 1.09 lakh tenant farmers).
- Free Crop Insurance scheme:
 - 21.53 lakh farmers enrolled covering 67.53 Lakh acres with a state share of premium subsidy of Rs.1270.01 crores in Kharif 2019.
- 'Interest Free Crop loans' scheme to all the farmers who had availed crop loans up to Rs.1 lakh during 2019-20.
 - Those farmers who have repaid on time will get interest free loans for next financial year.
 - Rs. 100 Crs. is allocated towards interest free loans for 2019-20.
- 9 hrs. Free Power Supply during day time extended to agri. feeders.
- 54,874 Aqua farmers benefitted - @ Rs. 1.50 per unit from July, 2019.
- Price Stabilization Fund – Rs. 3000 earmarked.
- To set up Cold Storages/ Go-downs/ Food processing units (on need basis) in every Assembly Constituency.
 - For 2019-20, 13 Cold Storages with capacity of 65000 MTs.
- Enhanced the ex-gratia from Rs.5 Lakhs to Rs.7 Lakhs for the rehabilitation of the deceased farmers.
- Rs.2,000 crores was allocated under Natural Calamity Relief Fund.

2. YSR Arogya Sri for All

- Universal Health Cards under YSR Arogyasri to persons with annual income below Rs.5 Lakhs.
- Thousand new Procedures exceeding treatment cost of Rs.1000/- identified for implementation as pilot project in West Godavari from 1st January, 2020
- 200 new procedures identified for implementation from 01.01.2020 in the remaining 12 districts
- As part of coverage of Arogyasri outside AP, 130 hospitals are empaneled covering 716 Super specialty procedures hospitals in 3 Cities viz., Hyderabad, Chennai and Bengaluru.
- Financial assistance to the patients who undergo surgeries under Dr. YSR Arogya Asara for the post-operative recovery period @ Rs.225/- per day subject to a maximum of Rs. 5000/- per month.
- Pension of Rs. 10,000 per month will be paid on saturation mode to all eligible patients suffering from serious chronic ailments, including Thalassemia, Kidney disease, Sickle cell & Hemophilia patients. To be launched on 21st January, 2020.

3. Jagananna AmmaVodi

- The programme will be launched on 9th January, 2020 to reduce drop outs.
- Allocated Rs. 6455.81 Crores to benefit 43,03,873 Mothers/Guardians of students studying from class I to Intermediate.

4. YSR Asara

- Financial assistance of Rs. 27,168.83 Crs. to 933180 loan accounts (till election date) to be provided directly to DWCRA/SHGs in four installments as Bank loan outstanding. To become operational from the FY 2020-21.
- Zero Interest loans will be made available to DWCRA/SHG Groups. (Interest amount will be paid to banks by the government on behalf of SHG women).

5. Hike of pensions

- Eligibility age for getting Old Age Pension is reduced to 60 years from current 65 years and the amount is increased to Rs.3,000 /month in a phased manner.
- In the first year, the monthly pension is enhanced to Rs. 2250 from Rs. 2000.
- For all disabled persons, Trans-genders and Dappu artists' pension amount reased to Rs.3,000 per month.
- As on date, 53.35 lakh beneficiaries are covered under all pensions and an amount of 1305.38Crs, is distributed per month.

6. Fee reimbursement

- **Jagananna Vidya Deevena (RTF)**

- To provide complete fee reimbursement to every eligible student belonging to SC, ST, BC, EBC (other than Kapu), Kapu, Minority and Differently Abled category students
- ITI, Polytechnic and Degree & above level courses
- Studying in Govt/Aided/ Private colleges, affiliated to State Universities /Boards.
- Complete fee shall be credited to the respective College accounts on behalf of students.

- **Jagananna Vasathi Deevena (MTF):**

- Expenses for food and hostel expenses(per year)
- Rs. 10,000/- per person to ITI students,
- Rs. 15,000/- per person to polytechnic students,
- Rs. 20,000/ per person for other Degree and above courses
- The amount will be credited to the account of the mother of the student in two instalments.

- **YSR Navasakam:**

- Field level house-hold survey by Village/ Ward Volunteers and Village/ Ward Secretariat from 20-11-2019 to 20-12-2019 to identify the eligible beneficiaries
- After completion of the YSR Navasakam survey, a Fee Reimbursement card to each eligible student will be issued

7. YSR Housing for all Poor

- The scheme to distribute 25 lakh house sites to landless poor will be launched on Ugadi 2020.
- 10,81,273 beneficiaries in Rural areas and 11, 83,864 in Urban areas have been identified.
- Land to an extent of 17,528 acres in rural areas and 4,404 acres in urban is available as on 20th November, 2019,
- An extent of 24033.88 Acres of land is to be acquired (Urban 8,011.74 acres +Rural 16,022.10 Acres.)
- One House Site Patta will be issued for an extent of 1.5 cents in rural area and 1.00 cent in Urban area to every eligible household in the name of woman beneficiary of the house. The patta will be handed over to the beneficiary on the day of Ugadi, 2020.
- Identification of the land, and modalities are under process.

8. Ban on Liquor

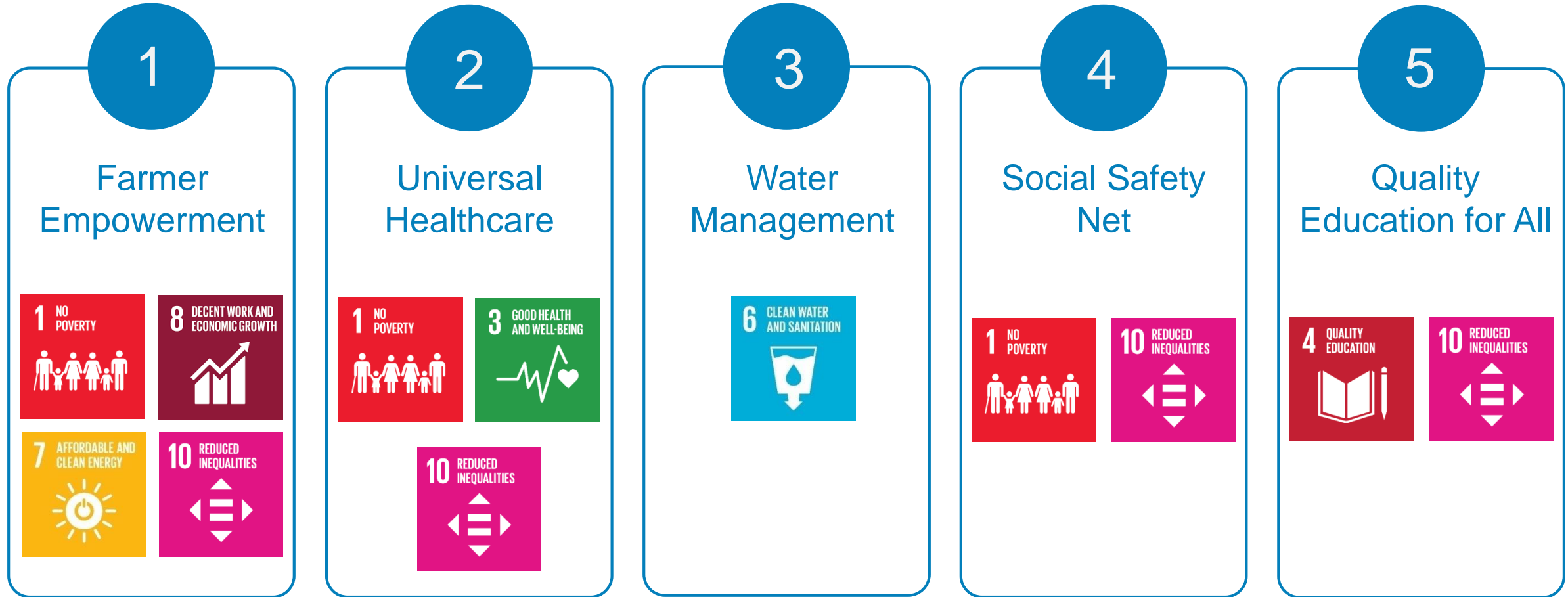
- Belt Shops (Un-authorized liquor outlets) have been abolished in all the areas.
- The government have taken over the retail trade and entrusted the task to the Andhra Pradesh State Beverages Corporation.
- The Govt. has reduced the no. of liquor shops from 4,380 to 3,500. The number of shops has been reduced to lessen the availability/consumption of liquor. The business hours of the retail outlets have been reduced from (10.00 AM -10.00 PM) to (11.00 AM - 08.00 PM) to reduce the availability of liquor.
- Nearly 50% of the shops existing have been reduced in rural areas which resulted a drop in consumption of liquor.

9. YSR Jalayagnam

- To provide 100% household tap connections by 2024 with 105 LPCD in rural areas, 135 LPCD in urban areas and 150 LPCD in corporations.
- The Jalayagnam projects are prioritized under 3 categories based on their progress. The action plan is chalked out by the department for completion of these projects in a phased manner in the next 4 years.
- Out of the total 54 Jalayagnam Irrigation Projects, 39 projects which are under progress are targeted for completion in the next 4 years.
- Focusing on Polavaram project, with an aim to complete by 2021. Under the Polavaram project, it is targeted to create 7.2 lakh acres of new ayacut, stabilize 23.5 lakh acres of ayacut and to generate 960 MW Hydro Power (12x80 MW).

Navaratnalu – Human Development aligned with SDG [1/2]

Goal and Target Mapping Synergy



Navaratnalu – Human Development aligned with SDG [2/2]

Goal and Target Mapping Synergy



Monitoring the progress

- **A state level Monitoring & Evaluation Committee established under the Chairmanship of Hon'ble Chief Minister to regularly monitor the progress under various indicators**
- **A District level Monitoring & Evaluation Committee established under the Chairmanship of the District-in-charge Minister to regularly monitor the progress under various indicators**
- **A web based monitoring system is being developed for the monitoring purpose.**

THANKS